

Product Features

Duct

Low/Mid/High Static Pressure Duct

Samsung offers several different ducted units which suit various applications. Whether you have a small void or large installation space in the ceiling, Samsung offers a ducted solution to suit your requirements. LSP Slim ducts are commonly used in hotel applications, while MSP and HSP ducts can be used in larger buildings such as open-plan offices and warehouses.



MSP Duct



HSP Duct



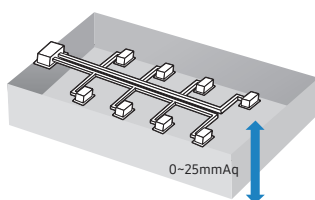
LSP Slim Duct



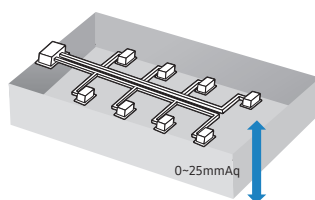
MSP Duct S

Air Coverage for Any Application

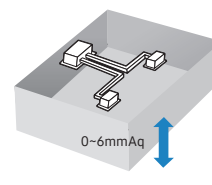
This provides the opportunity of designing more inlets and outlets, benefiting users by offering a more flexible range of installation options. In turn, this results in larger and more reliable coverage areas, servicing more people with more conditioned air.



MSP Duct



HSP Duct



LSP Slim Duct

Reduced Noise Levels & Increased Airflow

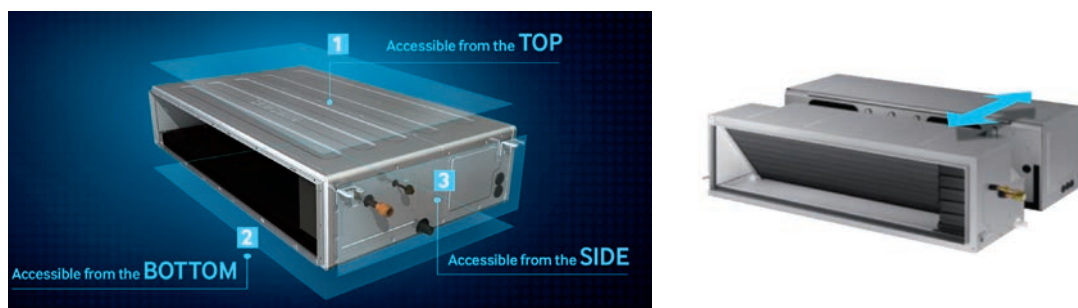
Thanks to the aerodynamic profile the new Inverter fan enables a greater airflow and ensures a more even air distribution.



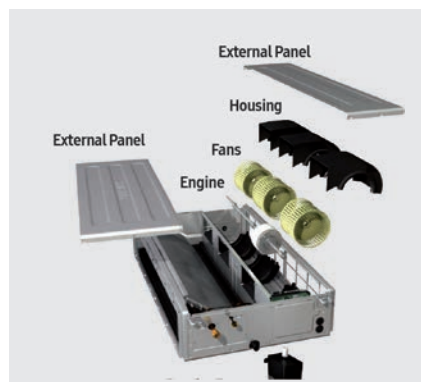
High-efficiency fan with inverter motor

Simplified Installation & Maintenance

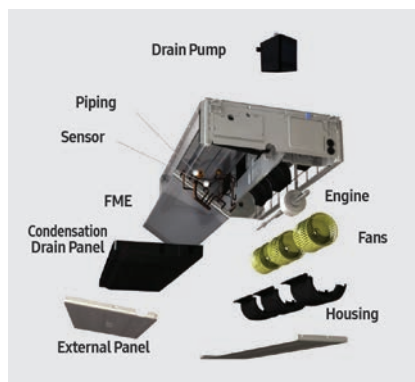
Thanks to the ultra-compact design, Samsung duct units can be placed anywhere and the unit can also be split into two parts (18/20/25kW models) to make the installation and maintenance easier. The indoor unit can be accessed from three different sides: from the top, from the bottom and from one side; this simplifies the usual maintenance activities.



Accessible from the top



Accessible from the bottom



Accessible from the side



Specifications

LSP Slim Duct



- Fan with inverter motor; prevalence adjustable up to 40Pa; thickness of just 200mm
- 750 mmH2O condensation drain pump (optional); antibacterial filter included
- Communication with the "Nasa" protocol
- Virus Doctor device only for 5.2/7.1 models (optional); WI-Fi kit (optional)
- Power supply: single-phase 220 V - 50 Hz
- Inverter Twin Rotary compressor – outdoor unit (except from 2.6/3.5kW models - Single Rotary)
- Possibility to connect two, three or four indoor units (twin-triple-quadi)

Model	Indoor Unit Outdoor Unit		AC026MNLDKH/EU AC026MXADKH/EU	AC035MNLDKH/EU AC035MXADKH/EU	AC052MNLDKH/EU AC052MXADKH/EU	AC071MNLDKH/EU AC071MXADKH/EU
EAN	Indoor Unit		8806088576442	8806088576480	8806088576527	8806088576596
	Outdoor Unit		8806088576466	8806088576497	8806088576794	8806088576619
Cooling	Std Capacity (Min~Max)	kW	2.60 (0.95~3.50)	3.50 (1.00~4.10)	5.00 (1.20~6.00)	7.10 (2.20~8.00)
	Std Absorption (Min~Max)	kW	0.76 (0.24~1.20)	1.20 (0.24~1.50)	1.74 (0.35~2.20)	2.33 (0.35~3.95)
	SEER: Seasonal Energy Efficiency Ratio	-	6,1	5,9	6,1	5,9
	Seasonal Energy Efficiency Class	-	A++	A+	A++	A+
	Design Heat Load (Pdesignc)	kW	2,6	3,5	5,0	7,1
	Indicative Annual Energy Consumption (Q ^{CE})	kWh/a	149	208	287	421
Heating	Std Capacity (Min~Max)	kW	3.30 (0.98~4.30)	4.00 (1.00~5.00)	6.00 (1.10~7.20)	8.00 (1.90~9.00)
	Std Absorption (Min~Max)	kW	0.87 (0.20~1.45)	1.22 (0.19~1.80)	1.70 (0.26~2.70)	2.27 (0.35~3.95)
	SCOP: Seasonal Coefficient of Performance	-	4,0	4,0	3,9	3,9
	Seasonal Energy Efficiency Class	-	A+	A+	A	A
	Design Heat Load (Pdesignh)	kW	2	2	2,4	3,7
	Electric back-up heater capacity elbu (Tj)	kW	-	-	-	-
	Declared capacity	kW	2	2	2,4	3,7
	Indicative annual energy consumption (Q ^{HE})	kWh/a	700	700	862	1328
Indoor Unit	Dimensions (WxHxD)	mm	700x199x600	700x199x600	1100x200x450	1100x200x450
	Panel Dimensions (WxHxD)	mm	-	-	-	-
	Weight	Kg	19,4	19,4	23,4	23,4
	Panel Weight	Kg	-	-	-	-
	Treated Air (Max)	m3/min	9,0	9,5	13,5	19,0
	Static Pressure Min~Std~Max	mmH2O	0-2.5-4.0	0-2.5-4.0	0-3.0-4.0	0-3.0-4.0
	Sound Power Level	dB(A)	53	53	55	59
Outdoor Unit	Dimensions (WxHxD)	mm	790x548x285	790x548x285	880x638x310	880x798x310
	Weight	Kg	32,8	32,8	43,8	53
	Sound Power Level	dB(A)	59	61	62	65
	Power Supply	Ø, V, Hz	1, 220-240, 50	1, 220-240, 50	1, 220-240, 50	1, 220-240, 50
	Operating Range (Cooling)	°C	-15~50	-15~50	-15~50	-15~50
	Operating Range (Heating)	°C	-20~24	-20~24	-20~24	-20~24
Installation Data	Liquid/Gas Piping	Ømm (inch)	6.35 (1/4") 9.52 (3/8")	6.35 (1/4") 9.52 (3/8")	6.35 (1/4") 12.70 (1/2")	6.35 (1/4") 15.88 (5/8")
	Piping Length Max	m	20	20	30	50
	Maximum Elevation Gap (Indoor/Outdoor Unit)	m	15	15	20	30
	Maximum Piping Length without Adding Refrigerant	m	20	20	5	5
	Additional Refrigerant Charging	g/m	0	0	10	20
Refrigerant	Refrigerant Type	-	R-410A	R-410A	R-410A	R-410A
	GWP: Global warming potential of the used refrigerant	-	2088	2088	2088	2088
	Factory Charging	Kg	1,05	1,05	1,30	1,50
	Ton equivalent Co ₂	tCo ₂ ,Eq	2,19	2,19	2,71	3,13

Accessories

Drain Pump (Optional)	Individual Controllers (Optional)			Others (Optional)		
						
MDP-G075SP (only for 5.2~7.1 kW)	MR-EH00 (to be matched with MRK-A10N)	MWR-SH10N	MWR-WE13N	MIM-H03N	MRK-A10N (to be matched with MR-EH00)	MRW-TA



Residential

Multi Split

Commercial

VRF

Chiller

Ventilation

Air-to-Water Heating

Controls & Accessories









Specifications

MSP Duct



- Fan with inverter motor; prevalence adjustable up to 150Pa
- 750 mmH₂O condensation drain pump (optional); antibacterial filter included
- Communication with the "Nasa" protocol
- Virus Doctor device (optional); WI-FI kit (optional)
- Power supply: single-phase 220 V - 50 Hz
- Inverter Twin Rotary compressor – outdoor unit (except from 3.5kW models - Single Rotary)
- Possibility to connect two, three or four indoor units (twin-triple-quadi)

Model	Indoor Unit		AC035MNMDKH/EU	AC052MNMDKH/EU	AC060MNMDKH/EU	AC071MNMDKH/EU
	Outdoor Unit		AC035MXADKH/EU	AC052MXADKH/EU	AC060MXADKH/EU	AC071MXADKH/EU
EAN	Indoor Unit		8806088576756	8806088576534	8806088576558	8806088576831
	Outdoor Unit		8806088576497	8806088576794	8806088576800	8806088576619
Cooling	Std Capacity (Min-Max)	kW	3.50 (1.20~3.90)	5.00 (1.20~6.00)	5.80 (1.20~7.00)	7.10 (2.20~8.00)
	Std Absorption (Min-Max)	kW	1.05 (0.26~1.50)	1.56 (0.35~2.20)	1.95 (0.26~2.40)	2.15 (0.35~3.95)
	SEER: Seasonal Energy Efficiency Ratio	-	6,3	6,2	6,1	6,1
	Seasonal Energy Efficiency Class	-	A++	A++	A++	A++
	Design Heat Load (Pdesignc)	kW	3,5	5,0	5,8	7,1
	Indicative Annual Energy Consumption (Q ^{CE})	kWh/a	194	282	333	407
Heating	Std Capacity (Min-Max)	kW	4.00 (1.10~4.70)	6.00 (1.10~7.20)	7.00 (1.50~8.50)	8.00 (1.90~9.00)
	Std Absorption (Min-Max)	kW	1.20 (0.24~1.80)	1.58 (0.26~2.70)	1.95 (0.20~3.30)	2.20 (0.35~3.95)
	SCOP: Seasonal Coefficient of Performance	-	4,0	4,1	4,0	4,0
	Seasonal Energy Efficiency Class	-	A+	A+	A+	A+
	Design Heat Load (Pdesignh)	kW	1,8	2,4	2,6	3,7
	Electric back-up heater capacity elbu (Tj)	kW	-	-	-	-
	Declared capacity	kW	1,8	2,4	2,6	3,7
	Indicative annual energy consumption (Q ^{HE})	kWh/a	630	820	910	1295
Indoor Unit	Dimensions (WxHxD)	mm	850x250x700	850x250x700	850x250x700	850x250x700
	Panel Dimensions (WxHxD)	mm	-	-	-	-
	Weight	Kg	25,8	25,8	25,8	25,8
	Panel Weight	Kg	-	-	-	-
	Treated Air (Max)	m ³ /min	10,4	14,5	17,0	17,0
	Static Pressure Min-Std-Max	mmH ₂ O	0-2.5-15.0	0-3.0-15.0	0-3.0-15.0	0-3.0-15.0
	Sound Power Level	dB(A)	52	55	56	56
Outdoor Unit	Dimensions (WxHxD)	mm	790x548x285	880x638x310	880x638x310	880x798x310
	Weight	Kg	32,8	43,8	43,8	53
	Sound Power Level	dB(A)	61	62	62	65
	Power Supply	Ø, V, Hz	1, 220-240, 50	1, 220-240, 50	1, 220-240, 50	1, 220-240, 50
	Operating Range (Cooling)	°C	-15~50	-15~50	-15~50	-15~50
	Operating Range (Heating)	°C	-20~24	-20~24	-20~24	-20~24
Installation Data	Liquid/Gas Piping	Ømm (inch)	6.35 (1/4") 9.52 (3/8")	6.35 (1/4") 12.70 (1/2")	6.35 (1/4") 12.70 (1/2")	6.35 (1/4") 15.88 (5/8")
	Piping Length Max	m	20	30	30	50
	Maximum Elevation Gap (Indoor/Outdoor Unit)	m	15	20	20	30
	Maximum Piping Length without Adding Refrigerant	m	20	5	5	5
	Additional Refrigerant Charging	g/m	0	10	10	20
Refrigerant	Refrigerant Type	-	R-410A	R-410A	R-410A	R-410A
	GWP: Global warming potential of the used refrigerant	-	2088	2088	2088	2088
	Factory Charging	Kg	1,05	1,30	1,30	1,50
	Ton equivalent Co2	tCo ₂ Eq	2,19	2,71	2,71	3,13

Accessories							
Drain Pump (Optional)		Individual Controllers (Optional)			Others (Optional)		
							
MDP-G075SP	MDP-G075SQ	MR-EH00 (to be matched with MRK-A10N)	MWR-SH10N	MWR-WE13N	MIM-H03N	MRK-A10N (to be matched with MR-EH00)	MRW-TA

AC090MNMDKH/EU AC090MXADKH/EU	AC090MNMDKH/EU AC090MXADNH/EU	AC100MNMDKH/EU AC100MXADKH/EU	AC100MNMDKH/EU AC100MXADNH/EU	AC120MNMDKH/EU AC120MXADKH/EU	AC120MNMDKH/EU AC120MXADNH/EU	AC140MNMDKH/EU AC140MXADKH/EU	AC140MNMDKH/EU AC140MXADNH/EU
8806088576633	8806088576633	8806088576664	8806088576664	8806088576916	8806088576916	8806088576954	8806088576954
8806088576855	8806088576640	8806088576671	8806088576886	8806088576695	8806088576923	8806088576718	8806088576961
9.00 (3.00-11.30)	9.00 (3.00-11.30)	10.00 (3.00-12.00)	10.00 (3.00-12.00)	12.00 (3.00-13.50)	12.00 (3.00-13.50)	13.40 (3.50-15.50)	13.40 (3.50-15.50)
2.90 (0.60-4.46)	2.90 (0.60-4.46)	3.50 (0.60-4.70)	3.50 (0.60-4.70)	4.40 (0.90-5.50)	4.40 (0.90-5.50)	4.45 (0.80-6.44)	4.45 (0.80-7.90)
5,9	5,9	5,8	5,8	5,6	5,6	3.0 (EER)	3.0 (EER)
A+	A+	A+	A+	A+	A+	-	-
9,0	9,0	10,0	10,0	12,0	12,0	-	-
534	534	603	603	750	750	-	-
10.00 (2.20-13.90)	10.00 (2.20-13.90)	11.20 (2.20-15.50)	11.20 (2.20-15.50)	13.00 (2.50-17.00)	13.00 (2.50-17.00)	15.50 (3.50-18.00)	15.50 (3.50-18.00)
2.75 (0.46-5.20)	2.75 (0.46-5.20)	3.30 (0.46-5.40)	3.30 (0.46-5.40)	4.00 (0.70-5.90)	4.00 (0.70-5.90)	4.54 (0.70-7.36)	4.54 (0.70-7.90)
4,0	4,0	4,0	4,0	4,0	4,0	3.4 (COP)	3.4 (COP)
A+	A+	A+	A+	A+	A+	-	-
5,2	5,2	5,2	5,2	7,4	7,4	-	-
-	-	-	-	-	-	-	-
5,2	5,2	5,2	5,2	7,4	7,4	-	-
1820	1820	1820	1820	2590	2590	-	-
1200x250x700	1200x250x700	1200x250x700	1200x250x700	1300x300x700	1300x300x700	1300x300x700	1300x300x700
-	-	-	-	-	-	-	-
33,4	33,4	33,4	33,4	38,6	38,6	38,6	38,6
-	-	-	-	-	-	-	-
28,0	28,0	28,0	28,0	33,0	33,0	33,0	33,0
0-4.0-15.0	0-4.0-15.0	0-4.0-15.0	0-4.0-15.0	0-5.2-15.0	0-5.2-15.0	0-5.2-15.0	0-5.2-15.0
58	58	58	58	62	62	62	62
940x998x330	940x998x330	940x998x330	940x998x330	940x998x330	940x998x330	940x1210x330	940x1210x330
72	72	72	72	77	77	87	87
68	68	69	69	70	70	69	69
1,220-240,50	3,380-415,50	1,220-240,50	3,380-415,50	1,220-240,50	1,220-240,50	3,380-415,50	3,380-415,50
-15-50	-15-50	-15-50	-15-50	-15-50	-15-50	-15-50	-15-50
-20-24	-20-24	-20-24	-20-24	-20-24	-20-24	-20-24	-20-24
9.52 (3/8")	9.52 (3/8")	9.52 (3/8")	9.52 (3/8")	9.52 (3/8")	9.52 (3/8")	9.52 (3/8")	9.52 (3/8")
15.88 (5/8")	15.88 (5/8")	15.88 (5/8")	15.88 (5/8")	15.88 (5/8")	15.88 (5/8")	15.88 (5/8")	15.88 (5/8")
50	50	50	50	50	50	75	75
30	30	30	30	30	30	30	30
30	30	30	30	30	30	30	30
50	50	50	50	50	50	50	50
R-410A	R-410A	R-410A	R-410A	R-410A	R-410A	R-410A	R-410A
2088	2088	2088	2088	2088	2088	2088	2088
3,00	3,00	3,00	3,00	3,00	3,00	3,40	3,40
6,26	6,26	6,26	6,26	6,26	6,26	7,10	7,10

Specifications









High-Efficiency MSP Duct



- Fan with inverter motor; prevalence adjustable up to 150Pa
- 750 mmH2O condensation drain pump (optional); antibacterial filter included
- Communication with the "Nasa" protocol
- Virus Doctor device (optional); WI-FI kit (optional)
- Power supply: single-phase 220 V - 50 Hz
- Inverter Twin Rotary compressor – outdoor unit (except from 3.5kW models - Single Rotary)
- Possibility to connect two, three or four indoor units (twin-triple-quadri)

Model Name	Indoor Unit				AC035JNMCEH/EU		AC071JNMCEH/EU				
	Outdoor Unit				AC035JXSCEH/EU		AC071JXSCEH/EU				
Power Supply					Ø, #, V, Hz		1,2,220-240,50				
System	Capacity	Cooling(Min/Std/Max)		kW		0.90 / 3.50 / 4.20		3.00 / 7.10 / 8.50			
		Heating(Min/Std/Max)				0.80 / 4.30 / 5.80		3.00 / 8.00 / 11.00			
	Power	Power Input (Nominal)	Cooling(Min/Std/Max)		kW		0.19 / 0.94 / 1.26		0.86 / 1.92 / 2.20		
			Heating(Min/Std/Max)				0.16 / 1.18 / 1.65		0.71 / 2.05 / 4.10		
		Current Input (Nominal)	Cooling(Min/Std/Max)		A		1.30 / 4.70 / 6.10 1.10 /		4.30 / 8.70 / 10.00 3.60 /		
			Heating(Min/Std/Max)				5.40 / 7.00		9.30 / 18.00		
		MCA			A		12.7 (MCA)		26.7 (MCA)		
		MFA			A		13,97		30		
	Energy Efficiency	EER (Nominal Cooling)				-		3,72		3,7	
		COP (Nominal Heating)				-		3,64		3,9	
		Energy Grade				SEER		SEER 6.5 (A++)		SEER 6.1 (A++)	
					SCOP		SCOP 4.4 (A+)		SCOP 4.0 (A+)		
	Piping Connections	Liquid Pipe	Ø, mm		6,35		9,52				
			Ø, inch		1/4"		3/8"				
		Gas Pipe	Ø, mm		9,52		15,88				
			Ø, inch		3/8"		5/8"				
		Installation Limitation	Max. Length		m		20		75		
			Max. Height		m		15		30		
	Field Wiring	Transmission Cable		Ø, mm		0.75 - 1.25		0.75 - 1.25			
	Refrigerant	Type				-		R410A		R410A	
Control Method				-		EEV		EEV			
Factory Charging				kg / tCO2e		1.27 / 2.65		2.90 / 6.06			
Indoor Unit	Fan	Type		-		Sirocco		Sirocco			
		Motor	Output		W		153 x 1		153 x 1		
		Airflow Rate	High/Mid/Low		m³/min		12.90 / 11.00 / 9.50		21.00 / 18.50 / 16.50		
					l/s		215.00 / 183.33 / 158.33		350.00 / 308.33 / 275.00		
	External Static Pressure	Min/Std/Max		mmAq		0.00 / 2.50 / 15.00		0.00 / 3.00 / 15.00			
				Pa		0.00 / 24.50 / 147.00		0.00 / 29.40 / 147.00			
	Drain	Drain Pipe		Ø,mm		VP25 (OD 32, ID 25)		VP25 (OD 32, ID 25)			
	Sound	Pressure		High/Mid/Low		dB(A)		31 / 28 / 25		33 / 29 / 25	
		Power		Cooling				56		56	
	External Dimension	Net Weight				kg		25		32	
Net Dimensions (WxHxD)				mm		850 x 250 x 700		1,200 x 250 x 700			
Additional Accessories	Drain pump		Drain pump		-		MDP-G075SP		MDP-G075SP		
Outdoor Unit	Compressor	Type		-		BLDC Rotary		Twin BLDC Rotary			
		Model				-		DA128A1FA-20F		UG5T450FUEJX	
		Output				kW		0,96		4,12	
	Oil	Type				-		Ester oil VG74		PVE	
		Airflow Rate		Cooling		m³/min		33		112	
	Sound	Pressure		Cooling/Heating		dB(A)		47 / 48		49 / 49	
		Power		Cooling				62		65	
	External Dimension	Net Weight				kg		35		96	
		Net Dimensions (WxHxD)				mm		790 x 548 x 285		940 x 1,420 x 330	
	Operating Temp. Range	Cooling				°C		-20.0 ~ 50.0		-20.0 ~ 50.0	
Heating				°C		-25.0 ~ 24.0		-25.0 ~ 24.0			

Accessories

Drain Pump (Optional)		Individual Controllers (Optional)			Others (Optional)		
							
MDP-G075SP	MDP-G075SQ	MR-EH00 (to be matched with MRK-A10N)	MWR-SH10N	MWR-WE13N	MIM-H03N	MRK-A10N (to be matched with MR-EH00)	MRW-TA

AC100JNMCEH/EU	AC100JNMCEH/EU	AC125JNMCEH/EU
AC100JXSCGH/EU	AC100JXSCGH/EU	AC125JXSCGH/EU
1,2,220-240,50	1,2,220-240,50	1,2,220-240,50
3.50 / 10.00 / 12.00	3.50 / 10.00 / 12.00	3.50 / 12.50 / 14.00
3.70 / 11.20 / 17.00	3.70 / 11.20 / 17.00	3.70 / 14.00 / 19.00
0.95 / 2.74 / 3.54	0.95 / 2.74 / 3.54	0.95 / 3.79 / 4.60
0.81 / 2.63 / 6.90	0.81 / 2.47 / 6.90	0.81 / 3.58 / 7.20
1.90 / 4.40 / 5.50	4.20 / 12.00 / 15.60	1.40 / 6.00 / 7.00
1.70 / 4.30 / 10.50	4.30 / 11.80 / 30.00	1.70 / 5.60 / 11.00
14.7 (MCA)	34.70 (MCA)	14.70 (MCA)
15	40	15
3,65	3,65	3,3
4,26	4,53	3,91
SEER 6.7 (A++)	SEER 6.7 (A++)	-
SCOP 4.1 (A+)	SCOP 4.1 (A+)	-
9,52	9,52	9,52
3/8"	3/8"	3/8"
15,88	15,88	15,88
5/8"	5/8"	5/8"
75	75 (75)	75 (75)
30	30 (30)	30 (30)
0.75 ~ 1.25	0.75 ~ 1.25	0.75 ~ 1.25
R410A	R410A	R410A
EEV	EEV	EEV
2.90 / 6.06	2.90 / 6.06	2.90 / 6.06
Sirocco	Sirocco	Sirocco
244 x 1	244 x 1	244 x 1
36.10 / 29.30 / 24.00	36.10 / 29.30 / 24.00	38.60 / 33.00 / 26.20
601.67 / 488.33 / 400.00	601.67 / 488.33 / 400.00	643.33 / 550.00 / 436.67
0.00 / 4.00 / 15.00	0.00 / 4.00 / 15.00	0.00 / 5.20 / 15.00
0.00 / 39.20 / 147.00	0.00 / 39.20 / 147.00	0.00 / 50.96 / 147.00
VP25 (OD 32,ID 25)	VP25 (OD 32,ID 25)	VP25 (OD 32,ID 25)
37 / 33 / 28	37 / 33 / 28	39 / 35 / 31
61	61	63
36	36	36
1,300 x 300 x 700	1,300 x 300 x 700	1,300 x 300 x 700
MDP-G075SP	MDP-G075SP	MDP-G075SP
Twin BLDC Rotary	Twin BLDC Rotary	Twin BLDC Rotary
UG5T450FXAJX	UG5T450FXAJX	UG5T450FXAJX
4,01	4,01	4,01
PVE	PVE	PVE
112	112	112
1.866,67	1.866,67	1.866,67
50 / 50	50 / 50	52 / 52
66	66	69
96	96	96
940 x 1,420 x 330	940 x 1,420 x 330	940 x 1,420 x 330
-20.0 ~ 50.0	-20.0 ~ 50.0	-20.0 ~ 50.0
-25.0 ~ 24.0	-25.0 ~ 24.0	-25.0 ~ 24.0

Dimensional Drawings

High-Efficiency MSP Duct

AC035JNMCEH/EU

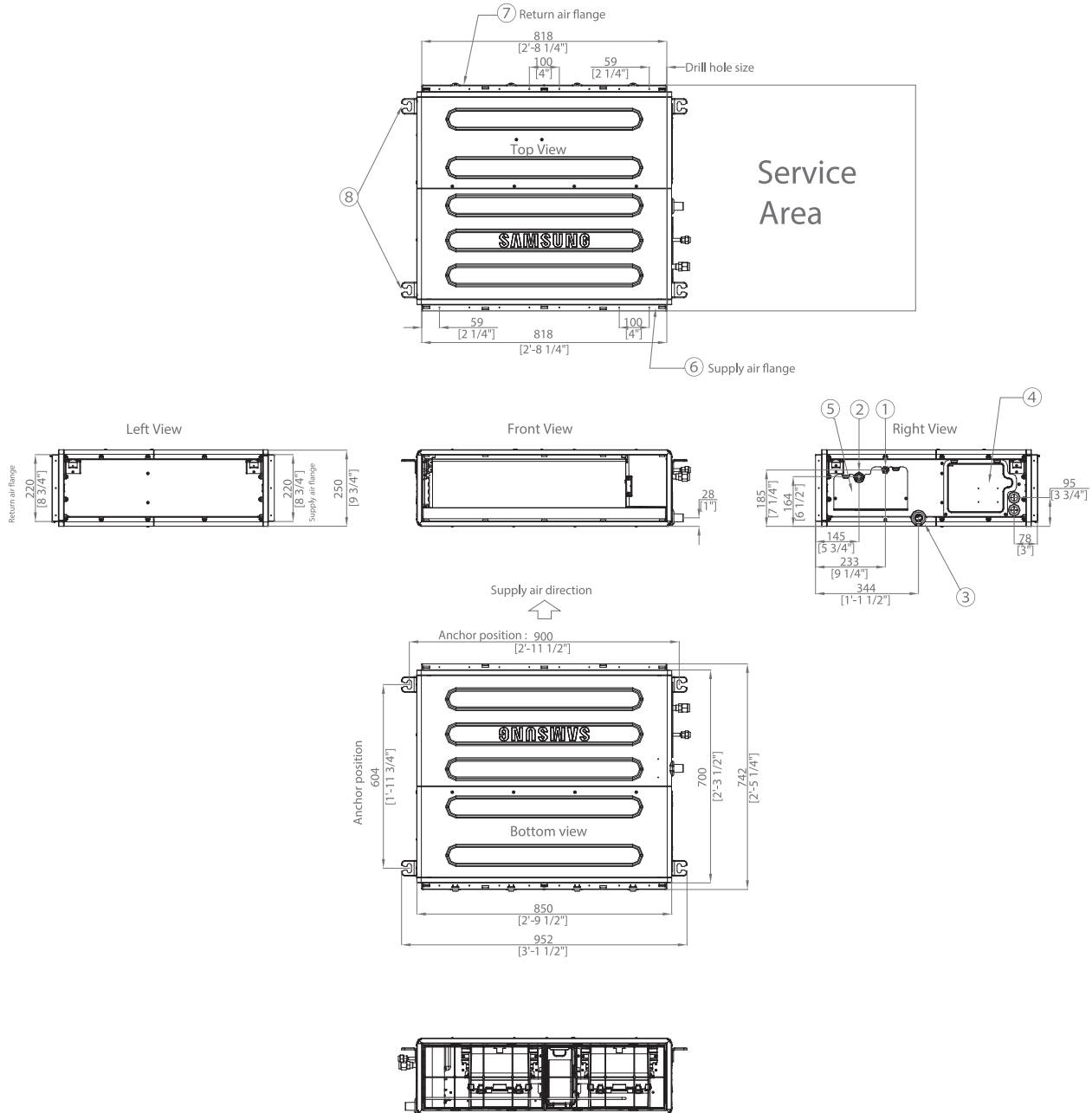


Table of descriptions

1	Refrigerant liquid pipe
2	Refrigerant gas pipe
3	Condensate drain
4	Power & Comm. wiring conduits
5	Refrigerant pipe conduits
6	Supply air flange
7	Return air flange
8	Hook

High-Efficiency MSP Duct

AC071JNMCEH/EU

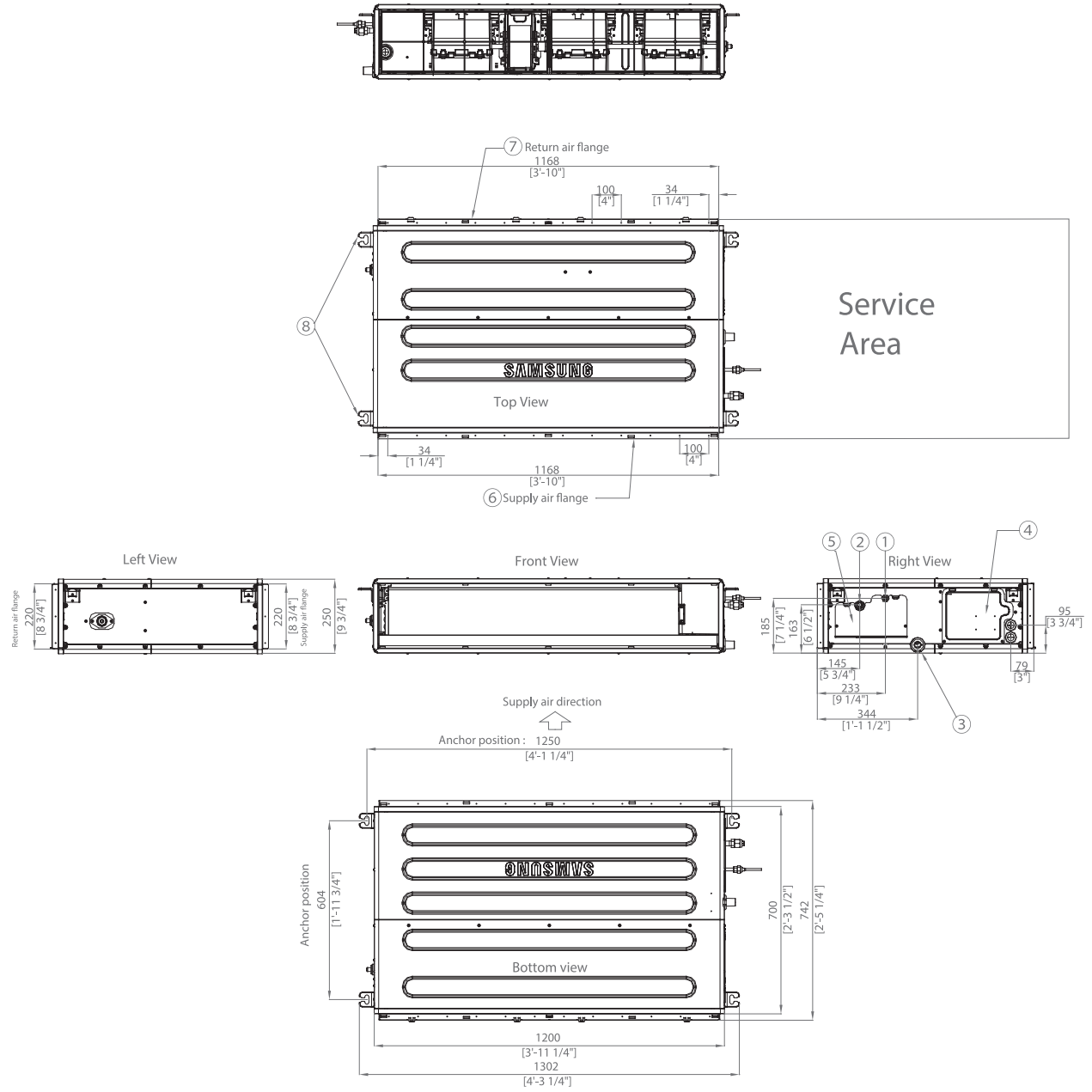


Table of descriptions

1	Refrigerant liquid pipe
2	Refrigerant gas pipe
3	Condensate drain
4	Power & Comm. wiring conduits
5	Refrigerant pipe conduits
6	Supply air flange
7	Return air flange
8	Hook

Residential

Multi Split

Commercial

VRF

Chiller

Ventilation

Air-to-Water Heating

Controls & Accessories

High-Efficiency MSP Duct

AC100JNMCEH/EU, AC125JNMCEH/EU

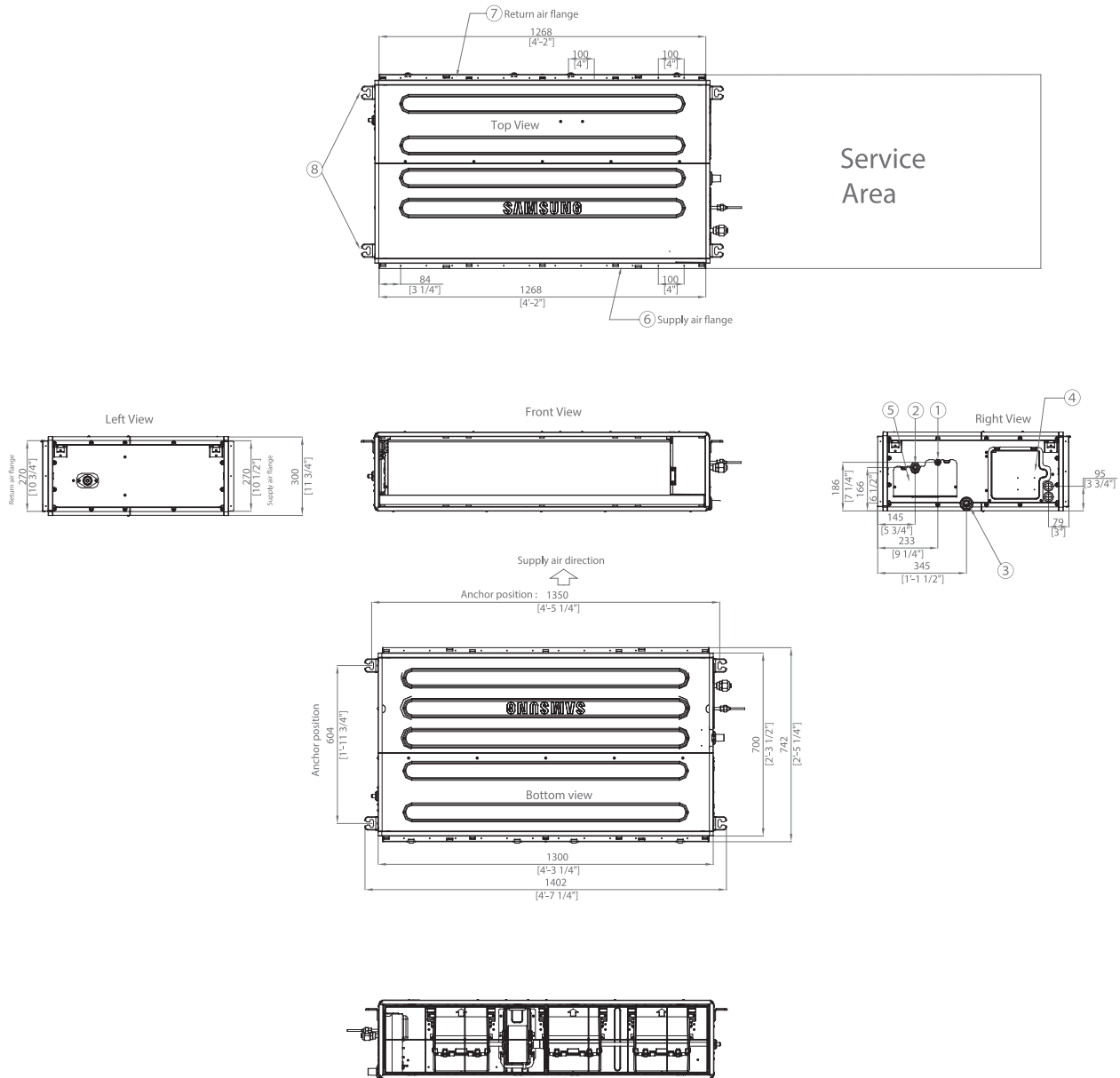


Table of descriptions

1	Refrigerant liquid pipe
2	Refrigerant gas pipe
3	Condensate drain
4	Power & Comm. wiring conduits
5	Refrigerant pipe conduits
6	Supply air flange
7	Return air flange
8	Hook



Residential

Multi Split

Commercial

VRF

Chiller

Ventilation

Air-to-Water Heating

Controls & Accessories

Specifications

HSP Duct



- Fan with inverter motor; prevalence adjustable up to 200Pa
- 750 mmH2O condensation drain pump (optional); antibacterial filter included
- Communication with the "Nasa" protocol
- Virus Doctor device (optional); WI-FI kit (optional)
- Power supply: three-phase 220 V - 50 Hz
- Inverter Twin Scroll compressor – outdoor unit (except from 18kW model - Twin Rotary)

Model	Indoor Unit Outdoor Unit		AC180JNHPKH/EU	AC200KNHPKH/EU	AC250KNHPKH/EU
			AC180JXAPNH/EU	AC200KXAPNH/EU	AC250KXAPNH/EU
Cooling	Std Capacity (Min~Max)	kW	18.0 (6.0~20.0)	20.00 (7.50~23.00)	25.00 (9.00~28.50)
	Std Absorption (Min~Max)	kW	5.45 (1.30~7.30)	6.45 (2.10~8.00)	9.58 (2.60~12.00)
	SEER: Seasonal Energy Efficiency Ratio	-	3.30 (EER)	3.10 (EER)	2.61 (EER)
	Seasonal Energy Efficiency Class	-	-	-	-
	Design Heat Load (Pdesignc)	kW	-	-	-
	Indicative Annual Energy Consumption (Q ^{cf})	kWh/a	-	-	-
Heating	Std Capacity (Min~Max)	kW	20.0 (4.8~22.5)	23.00 (8.50~25.00)	27.00 (10.00~32.00)
	Std Absorption (Min~Max)	kW	5.54 (1.20~7.60)	6.66 (2.10~9.80)	8.33 (2.50~13.50)
	SCOP: Seasonal Coefficient of Performance	-	3.61 (COP)	3.45 (COP)	3.24 (COP)
	Seasonal Energy Efficiency Class	-	-	-	-
	Design Heat Load (Pdesignh)	kW	-	-	-
	Electric back-up heater capacity elbu (Tj)	kW	-	-	-
	Declared capacity	kW	-	-	-
	Indicative annual energy consumption (QHE)	kWh/a	-	-	-
Indoor Unit	Dimensions (WxHxD)	mm	1350x450x910	1350x450x910	1350x450x910
	Panel Dimensions (WxHxD)	mm	-	-	-
	Weight	Kg	82,5	82,5	82,5
	Panel Weight	Kg	-	-	-
	Treated Air (Max)	m ³ /min	71,0	72,0	80,0
	Static Pressure Min-Std-Max	mmH2O	5-6.12-20.0	5-7.34-20.0	5-7.34-20.0
	Sound Power Level	dB(A)	69	70	72
Outdoor Unit	Dimensions (WxHxD)	mm	940x1420x330	940x1630x460	940x1630x460
	Weight	Kg	107,5	154	154
	Sound Power Level	dB(A)	76	75	77
	Power Supply	Ø, V, Hz	3,380-415,50	3,380-415,50	3,380-415,50
	Operating Range (Cooling)	°C	-15~50	-20~50	-20~50
	Operating Range (Heating)	°C	-20~24	-20~24	-20~24
Installation Data	Liquid/Gas Piping	Ømm (inch)	9.52 (3/8") 19.0 (3/4")	9.52 (3/8") 19.05 (3/4")	9.52 (3/8") 22.22 (7/8")
	Piping Length Max	m	75	75	75
	Maximum Elevation Gap (Indoor/Outdoor Unit)	m	30	30	30
	Maximum Piping Length without Adding Refrigerant	m	30	30	30
	Additional Refrigerant Charging	g/m	50	50	50
Refrigerant	Refrigerant Type	-	R-410A	R-410A	R-410A
	GWP: Global warming potential of the used refrigerant	-	2088	2088	2088
	Factory Charging	Kg	4,60	6,60	6,60
	Ton equivalent Co ₂	tCo ₂ Eq	9,60	13,78	13,78

Accessories

Drain Pump (Optional)



MDP-G075SP



MR-EH00

(to be matched with MRK-A10N)



MWR-SH10N



MWR-WE13N



MIM-H03N



MRK-A10N

(to be matched with MR-EH00)



MRW-TA

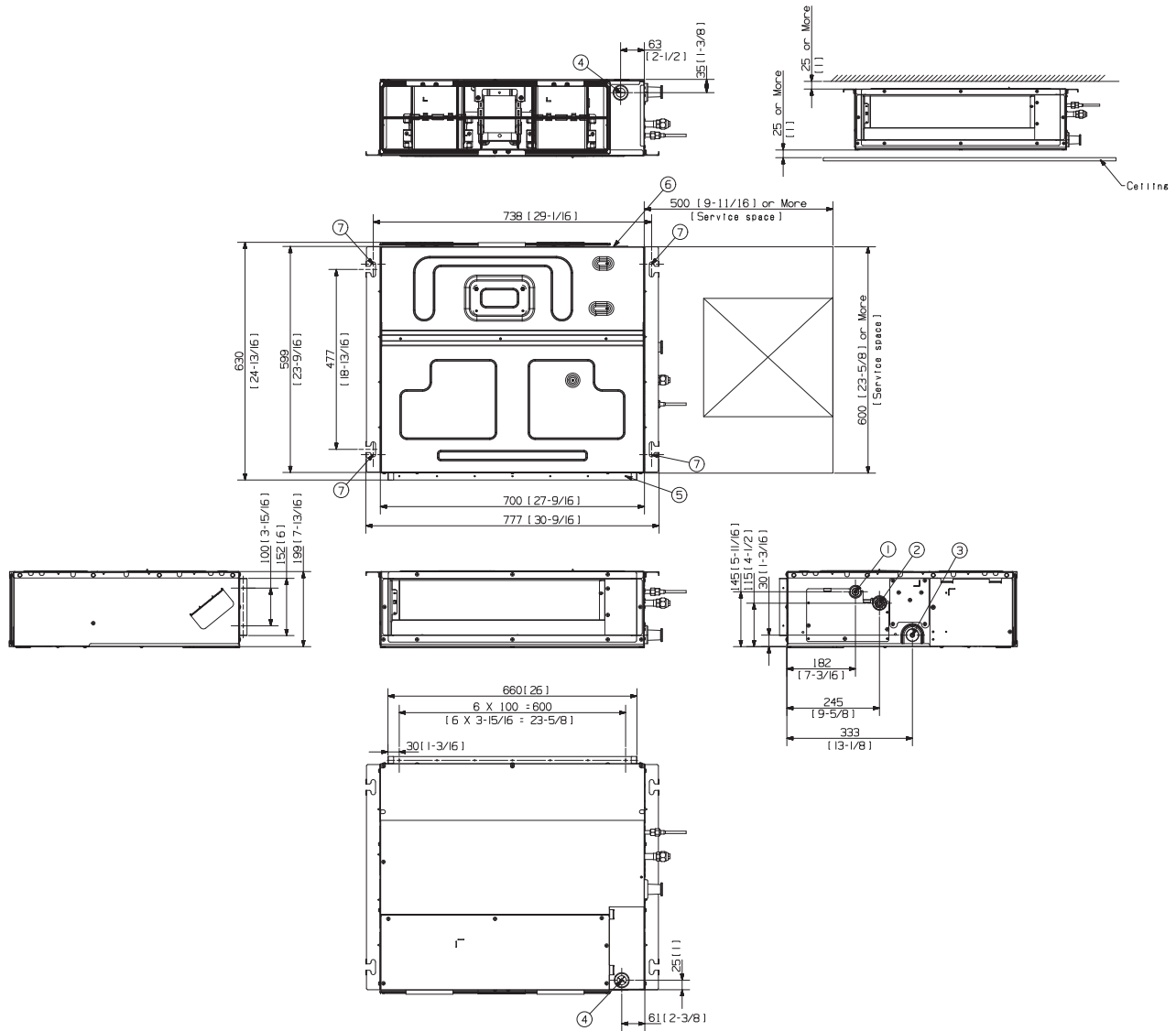
Individual Controllers (Optional)

Others (Optional)

Dimensional Drawings

LSP Slim Duct

AC026/035MNLDKH/EU



Pos.	Name	Description
1	Liquid piping	ø 6,35 mm (1/4")
2	Gas piping	ø 9,52mm (3/8")
3	Condensation drain piping	VP-25 (OD32, ID25)
4	Power supply cables connection / communication	-
5	Air intake	-
6	Air supply	-
7	Air tie rods	Use M8 - M10 bolt (4ea)

Residential

Multi Split

Commercial

VRF

Chiller

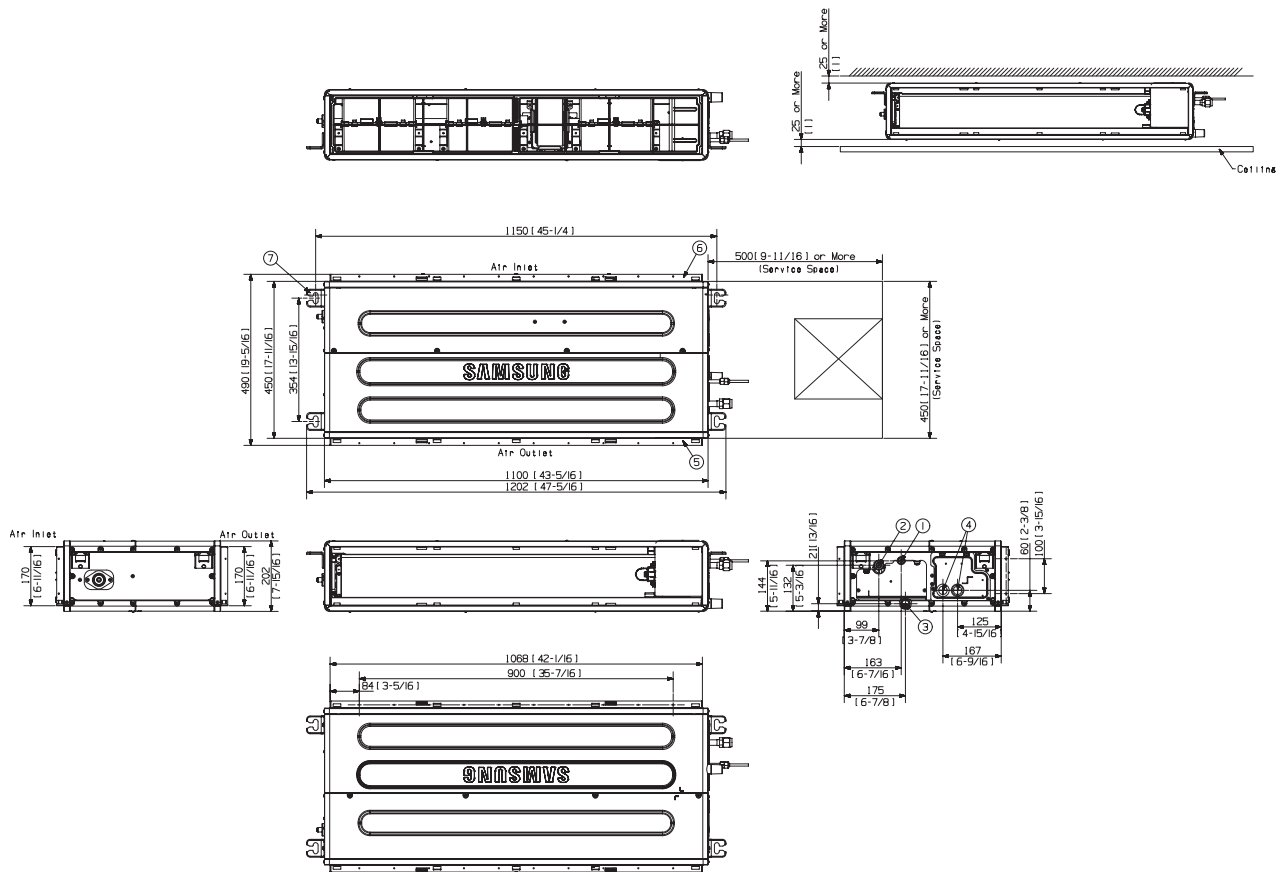
Ventilation

Air-to-Water Heating

Controls & Accessories

LSP Slim Duct

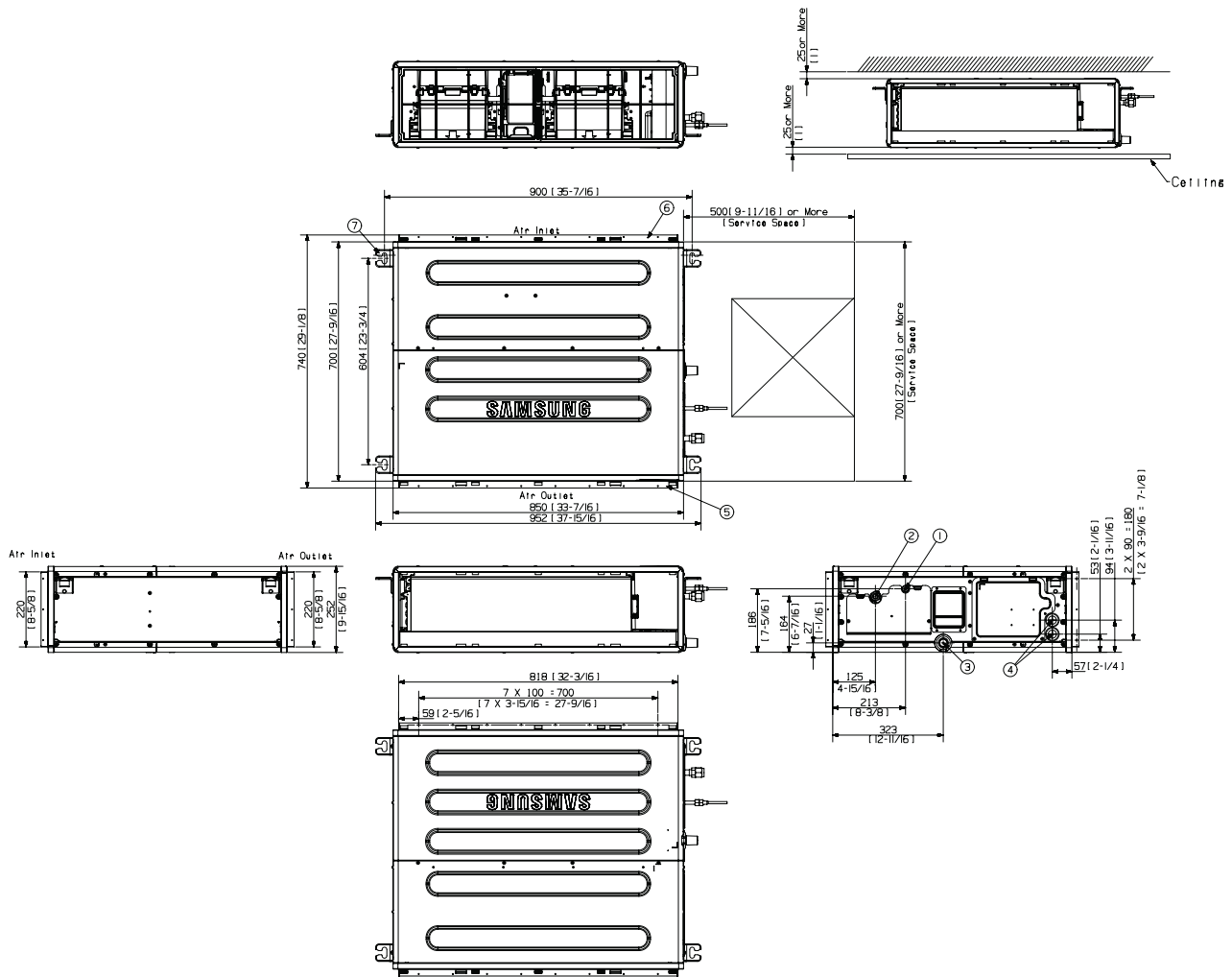
AC052/071MNLDKH/EU



Pos.	Name	Model	
		AC052MNLDKH/EU	AC071MNLDKH/EU
1	Liquid piping	ø 6,35 mm (1/4")	
2	Gas piping	ø 12.7mm (1/2")	ø 15.88mm (5/8")
3	Condensation drain piping	VP-25 (OD32, ID25)	
4	Power supply cables connection / communication	-	
5	Air intake	-	
6	Air supply	-	
7	Air tie rods	Use M8 - M10 bolt (4ea)	

MSP Duct

AC035/052/060/071MNMDKH/EU



Pos.	Name	Model		
		AC035MNMDKH/EU	AC052MNMDKH/EU	AC060MNMDKH/EU AC071MNMDKH/EU
1	Liquid piping		ø 6,35 mm (1/4")	
2	Gas piping	ø 9,52mm (3/8")	ø 12,7 mm (1/2")	ø 15,88 mm (5/8")
3	Condensation drain piping		VP-25 (OD32, ID25)	
4	Power supply cables connection / communication		-	
5	Air intake		-	
6	Air supply		-	
7	Air tie rods		Use M8 - M10 bolt (4ea)	

Residential

Multi Split

Commercial

VRF

Chiller

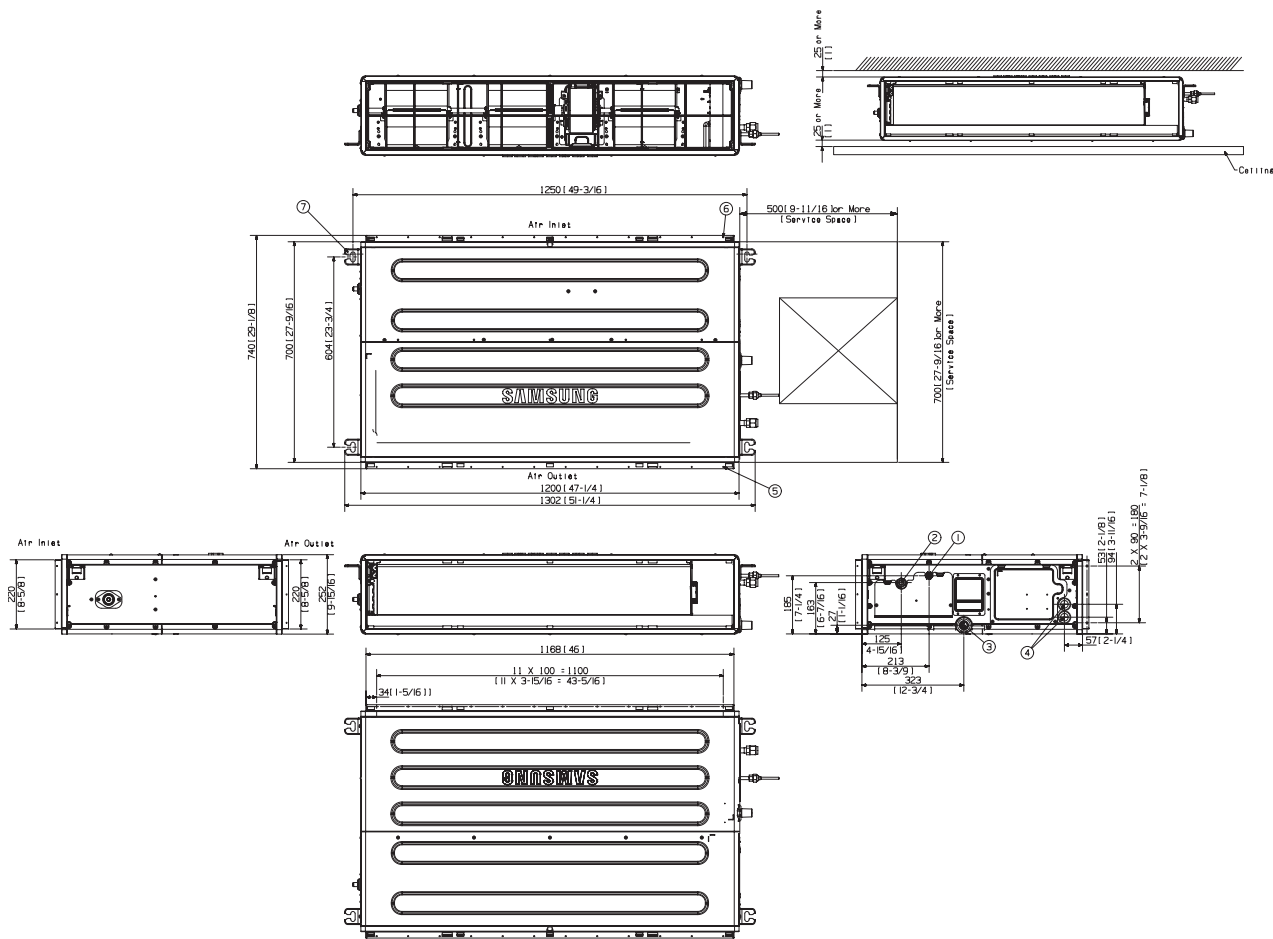
Ventilation

Air-to-Water Heating

Controls & Accessories

MSP Duct

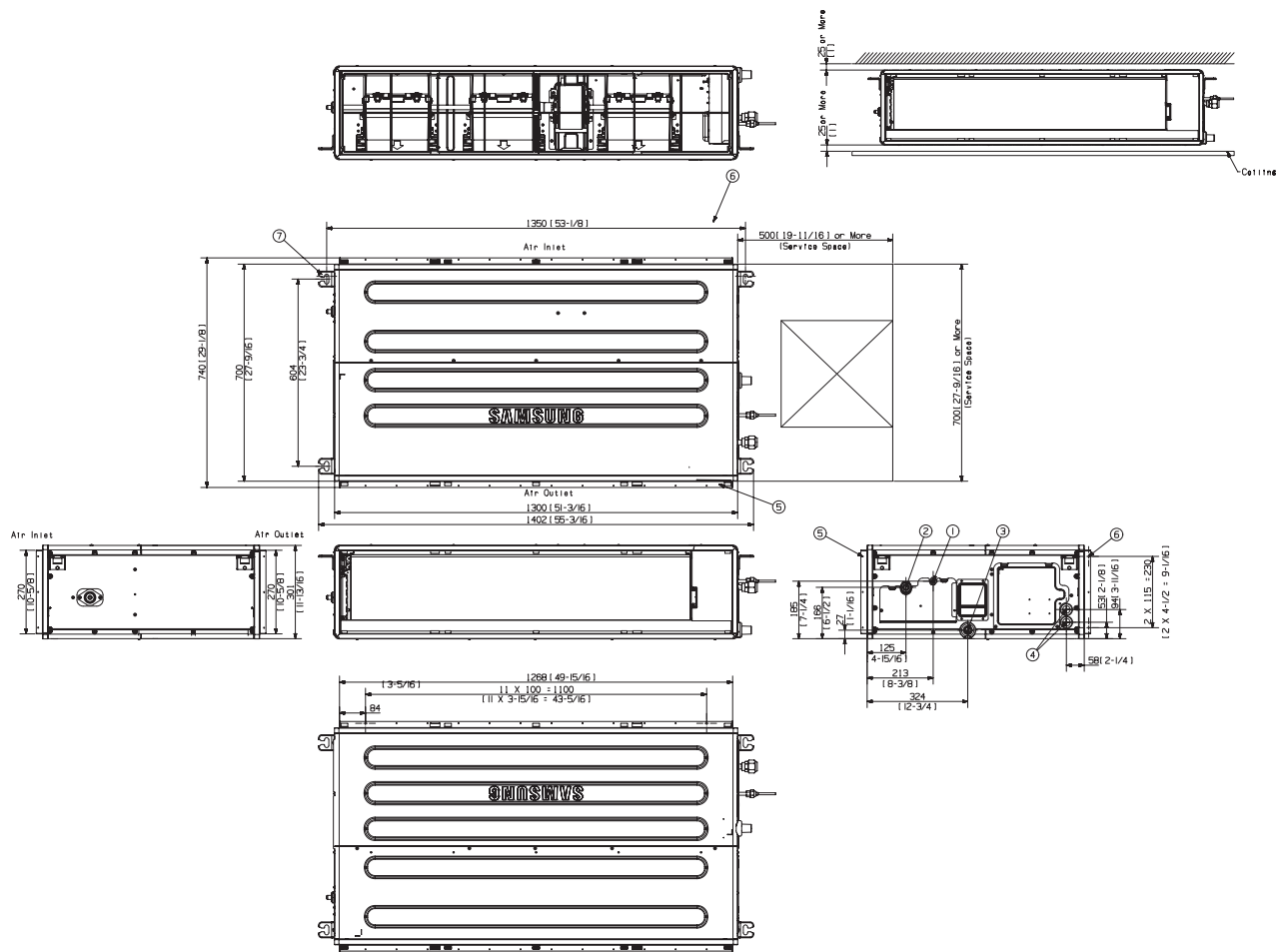
AC090/100MNDKH/EU



Pos.	Name	Description
1	Liquid piping	ø 9,52mm (3/8")
2	Gas piping	ø 15,88mm (5/8")
3	Condensation drain piping	VP-25 (OD32, ID25)
4	Power supply cables connection / communication	-
5	Air intake	-
6	Air supply	-
7	Air tie rods	Use M8 ~ M10 bolt (4ea)

MSP Duct

AC120/140MNM DKH/EU



Pos.	Name	Description
1	Liquid piping	ø 9,52mm (3/8")
2	Gas piping	ø 15,88mm (5/8")
3	Condensation drain piping	VP-25 (OD32, ID25)
4	Power supply cables connection / communication	-
5	Air intake	-
6	Air supply	-
7	Air tie rods	Use M8 - M10 bolt (4ea)

Residential

Multi Split

Commercial

VRF

Chiller

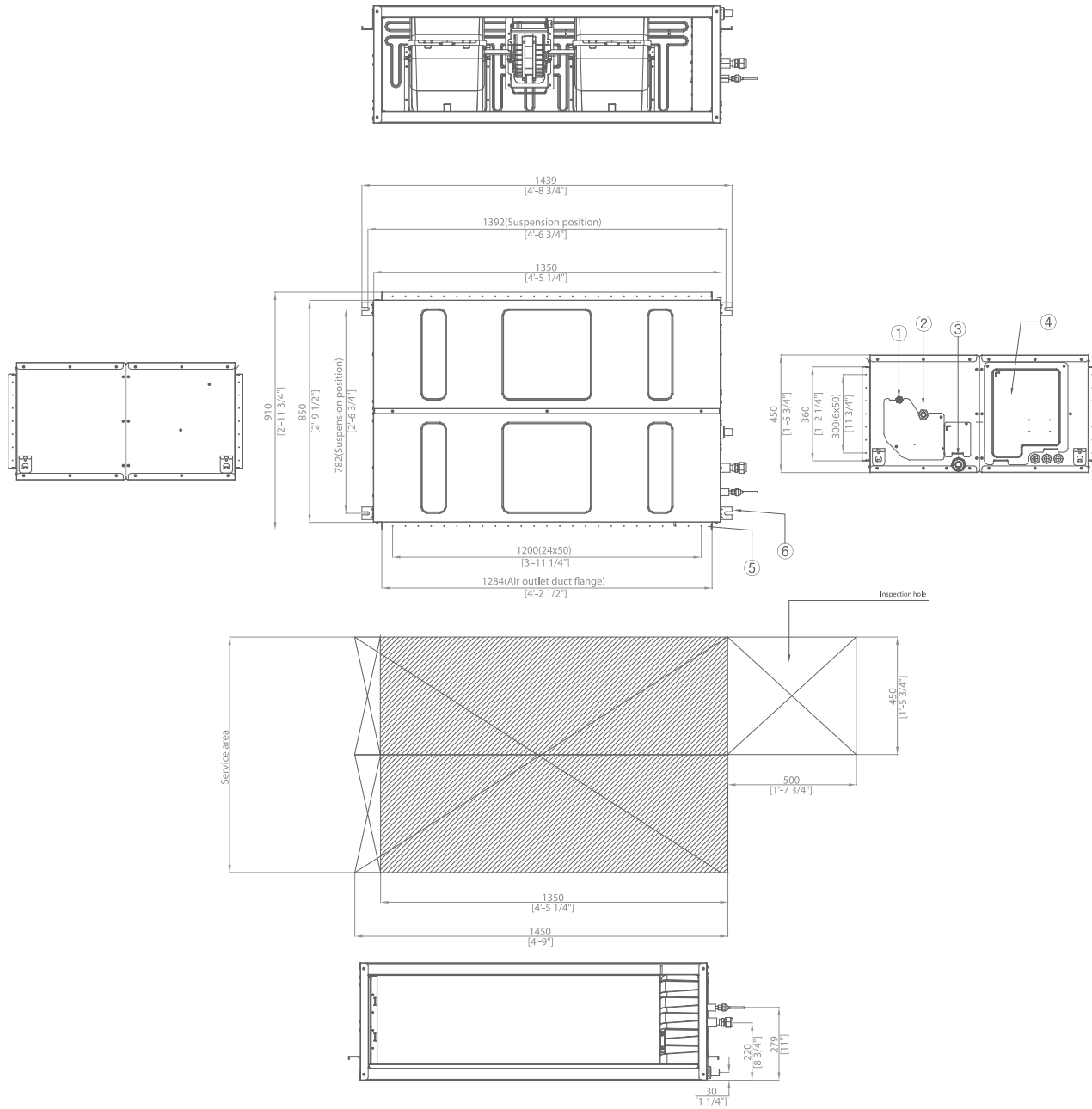
Ventilation

Air-to-Water Heating

Controls & Accessories

HSP Duct

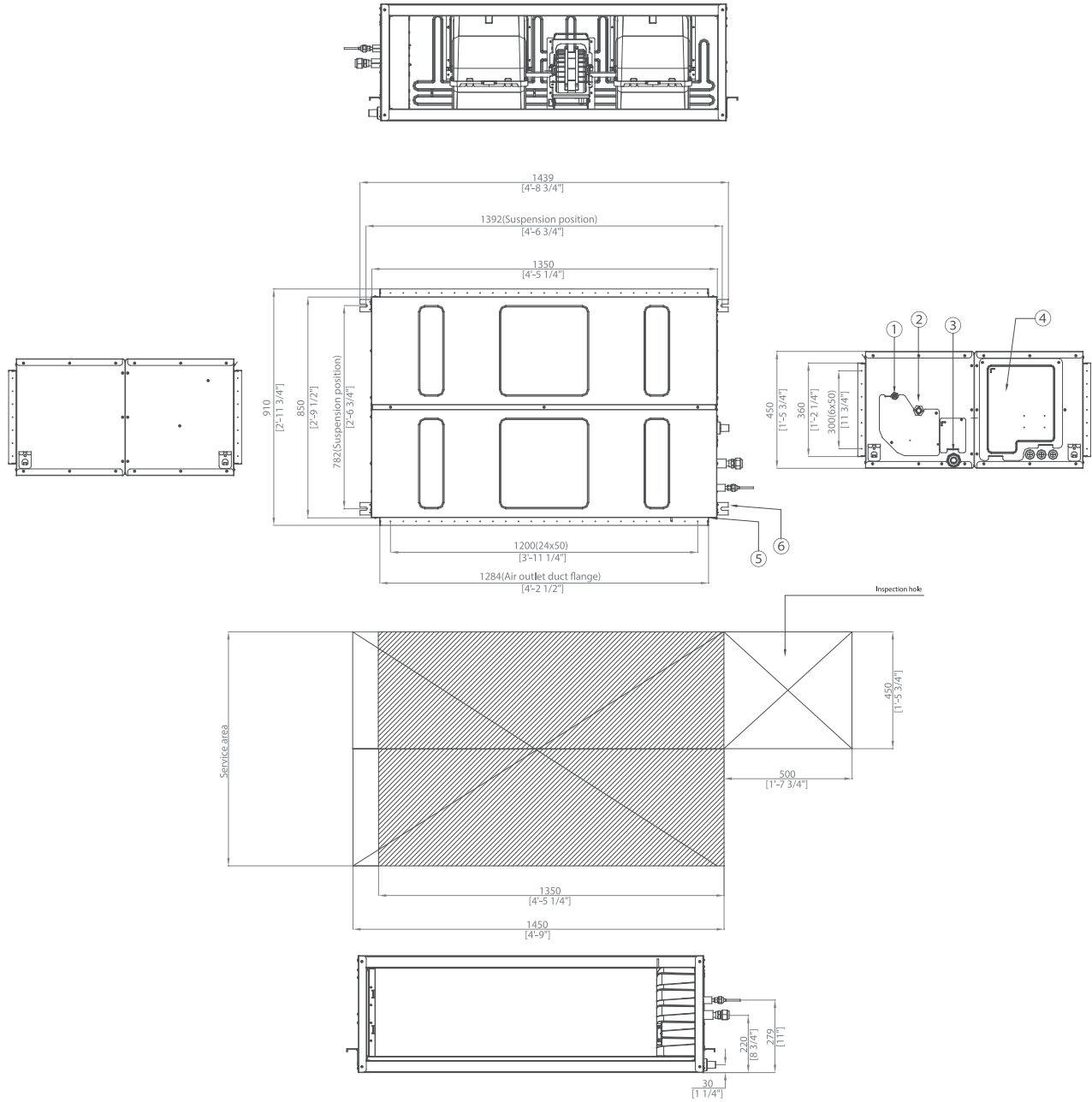
AC180JNHPKH/EU



Pos.	Name	Description
1	Liquid piping	ø 9,52 mm (3/8")
2	Gas piping	ø 19,05 mm (3/4")
3	Condensation drain piping	VP-25 (OD32, ID25)
4	Power supply cables connection / communication	-
5	Air supply	-
6	Air tie rods	-
7	Air tie rods	Use M8 ~ M10 bolt (4ea)

HSP Duct

AC200KNHPKH/EU, AC250KNHPKH/EU



Pos.	Name	Model	
		AC200KNHPKH/EU	AC250KNHPKH/EU
1	Liquid piping	ø 9,52 mm (3/8")	
2	Gas piping	ø 19,05 mm (3/4")	ø 22,22 mm (7/8")
3	Condensation drain piping	VP-25 (OD32, ID25)	
4	Power supply cables connection / communication	-	
5	Air supply	-	
6	Air tie rods	-	

Residential

Multi Split

Commercial

VRF

Chiller

Ventilation

Air-to-Water Heating

Controls & Accessories