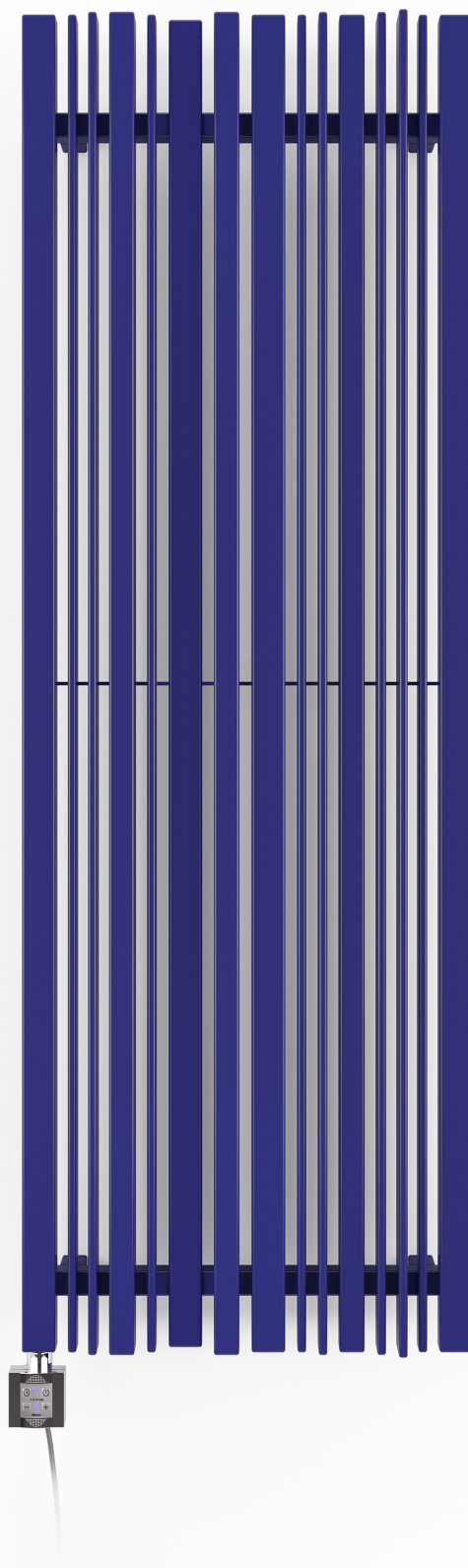
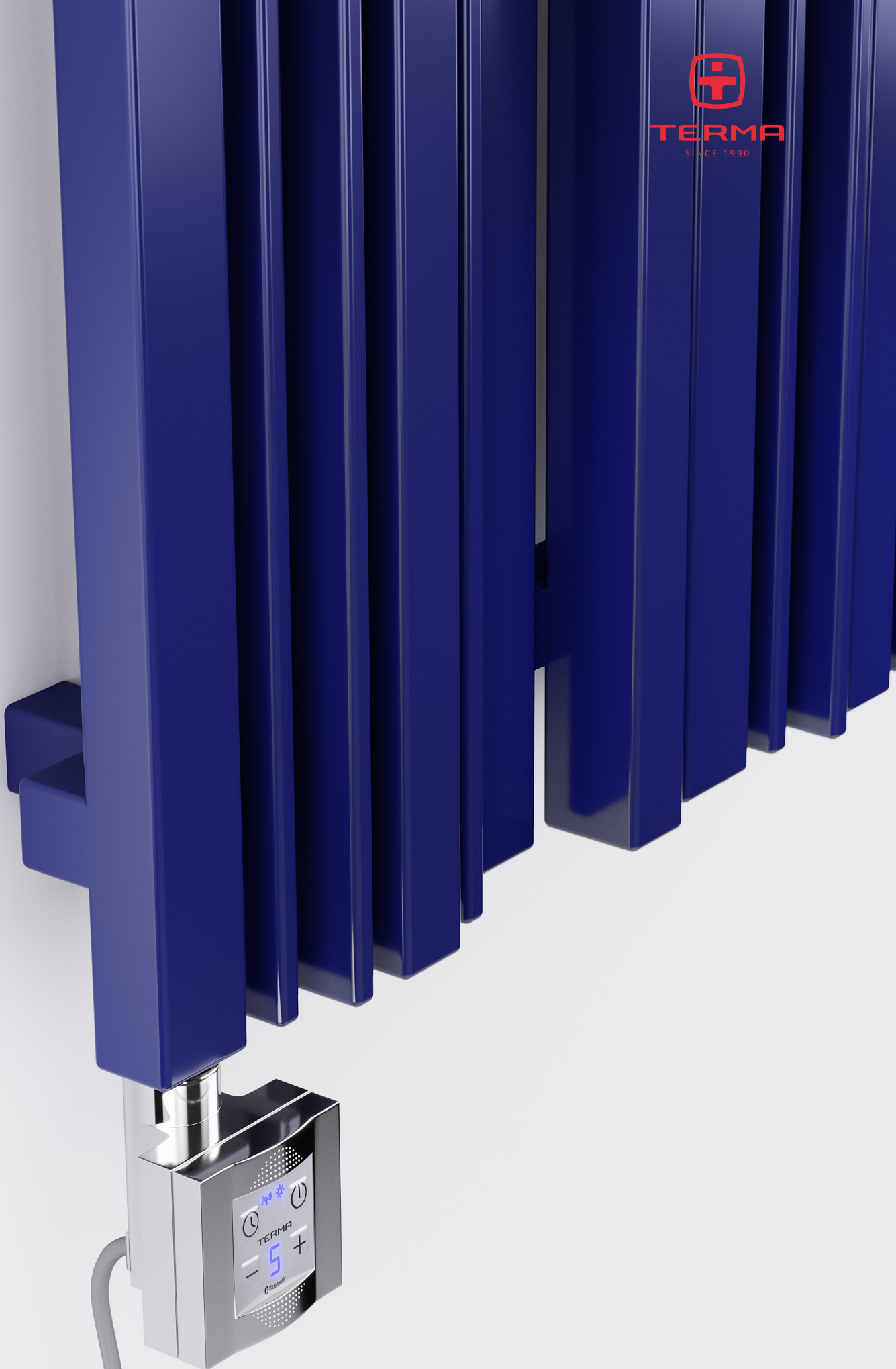


Sherwood V E



Sherwood V E 1600⇕ × 540⇔ E1
colour: RAL 5002

Heater KTX 4 BLUE

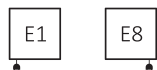


Sherwood V E

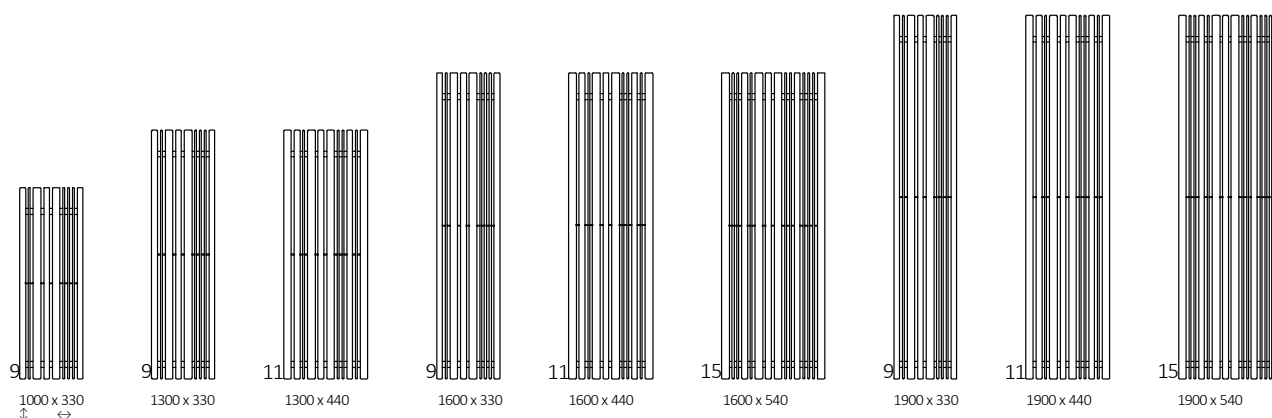


Design: *Terma*

Connections:



Available sizes:



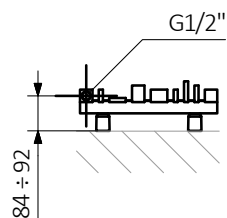
Specification:

A ↓ [mm]	B ↔ [mm]	☺ [W]	D [mm]	E [mm]	F [mm]	U [dm³]	⚖️ [kg]	Product code <small>Configuration code p. 5</small>
1000	330	600	220	800	75	5,53	18,10	WLSTV100033
1300	330	600	220	1100	75	7,05	23,06	WLSTV130033
1300	440	800	330	1100	75	9,80	29,81	WLSTV130044
1600	330	800	220	1400	75	8,58	28,04	WLSTV160033
1600	440	1000	330	1400	75	11,92	36,22	WLSTV160044
1600	540	1200	430	1400	75	13,45	43,99	WLSTV160054
1900	330	800	220	1700	75	10,10	33,01	WLSTV190033
1900	440	1200	330	1700	75	14,05	42,62	WLSTV190044
1900	540	1500	430	1700	75	15,84	51,79	WLSTV190054

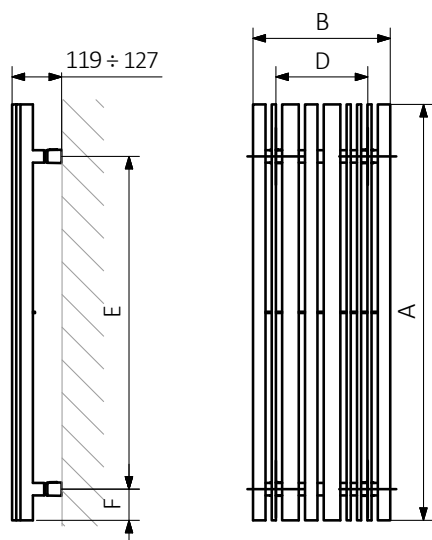
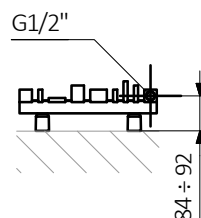


Technical drawing:

E1



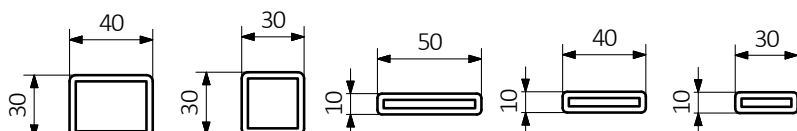
E8



A – Height B – Width C1-C5 – Distance between pipe centres D – Horizontal distance between mounting bracket centres E – Vertical distance between mounting brackets F – Distance between a mounting bracket and the bottom of the radiator

Collector:

Pipe:





Product codes can be found in product data sheet tables. The codes provide some basic information about the product while a partially filled configuration code contains complementary information about the detailed specifications. When placing an order, product codes should include the fully completed configuration part. The configuration code part should be placed after the main product code. The main product code and configuration part will appear as shown in the example below:

Construction of electric heater configuration code:

WLSTV100033

PRODUCT CODE
(located in the table for the product)

K916E1K4BM

CONFIGURATION CODE
(supplemented by hand)

Example Configuration

K 916 E1 K4B M

Package code
K - carton box

Colour code

Connection code

Heating element code

Type of heating element cable code

Epoxy primer

E - Code of epoxy primer is an extra processes.

WLSTV100033 K916E1 **E** — *Extra processes or additions code*



Legend



Available in chrome finish.



Radiator available in a "water" version.



Radiator suitable for dual fuel connection. Electric heating element can be installed.



Connection types dedicated for this radiator. The icon shows the flow and return connections for the radiator as well as the thermostatic valve and heating element position if applicable.



Suggested heating element power output for electric and dual fuel versions.



Weight.



Capacity.



Available in Chrome finish.