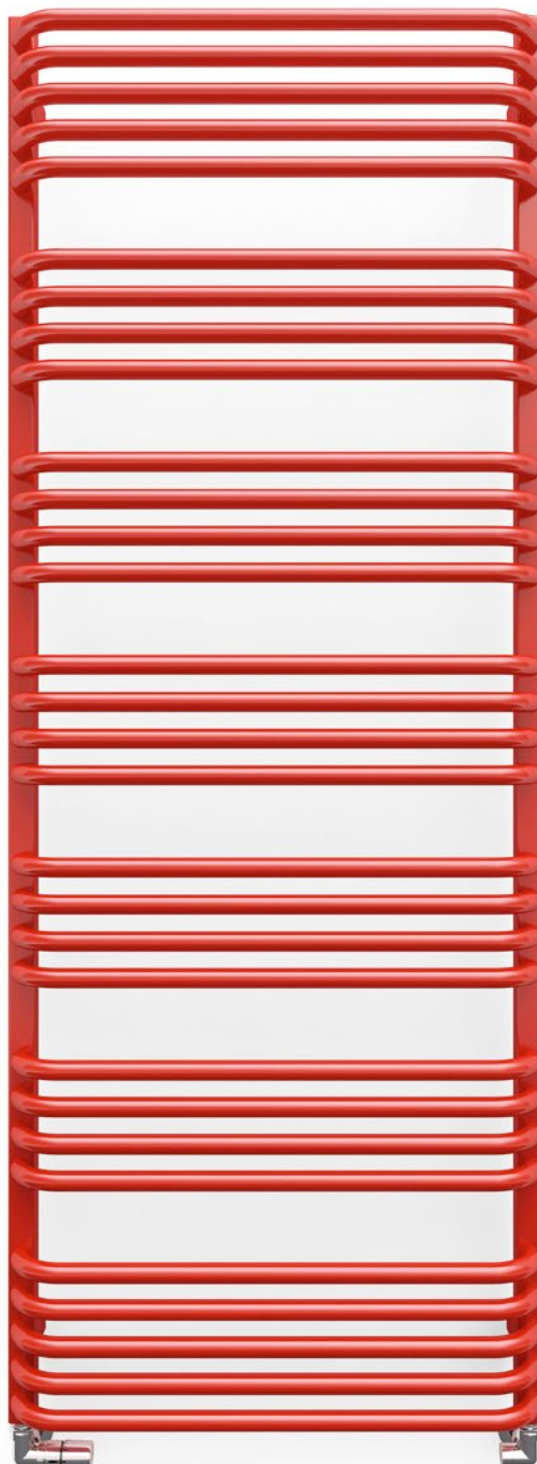


Alex

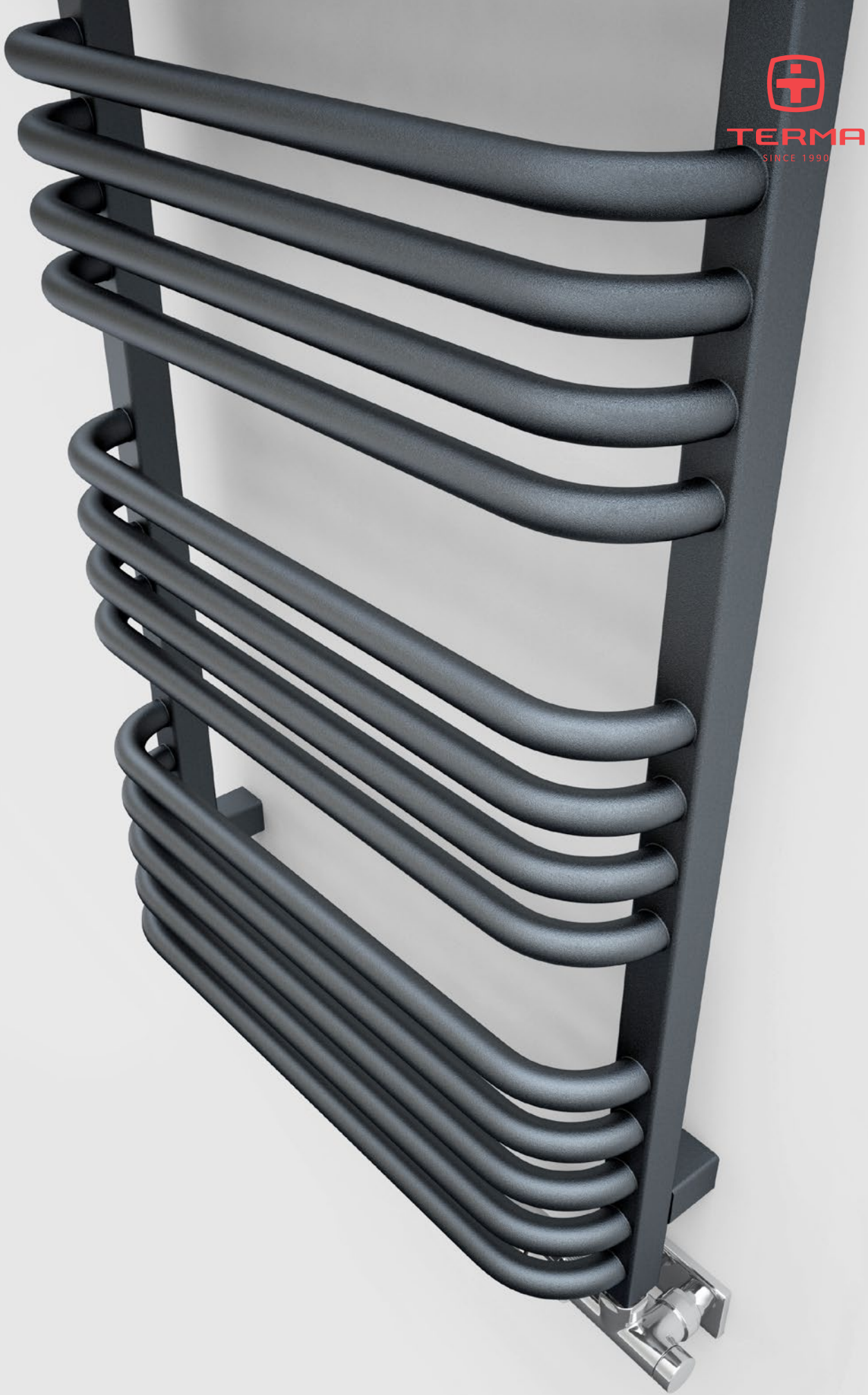



TERMA
SINCE 1990



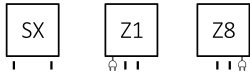
Alex 1580↑ × 600⇔ SX
colour: RAL 3020

3-axis thermostatic valve set, left, chrome
Pipe-masking set, chrome

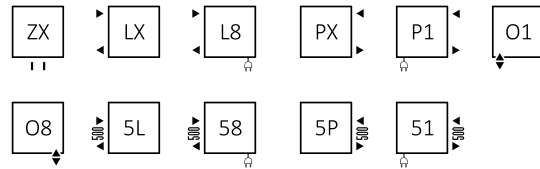




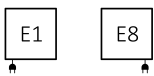
Standard connection:



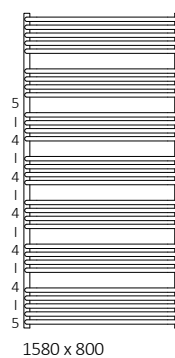
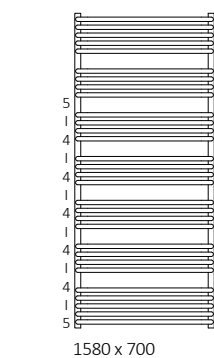
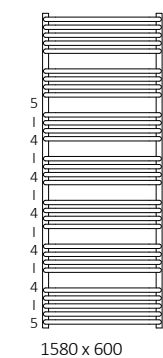
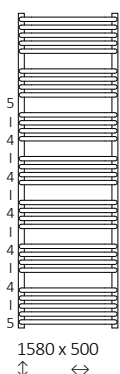
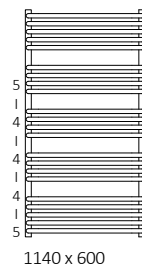
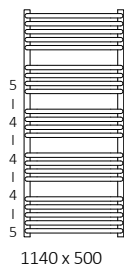
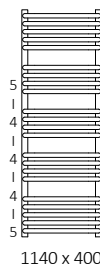
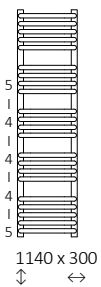
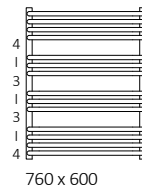
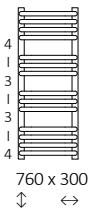
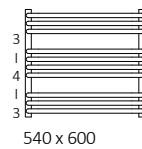
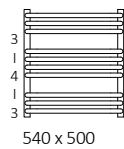
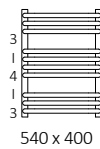
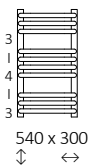
Optional connection:



Electric radiators:





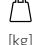
Available sizes:



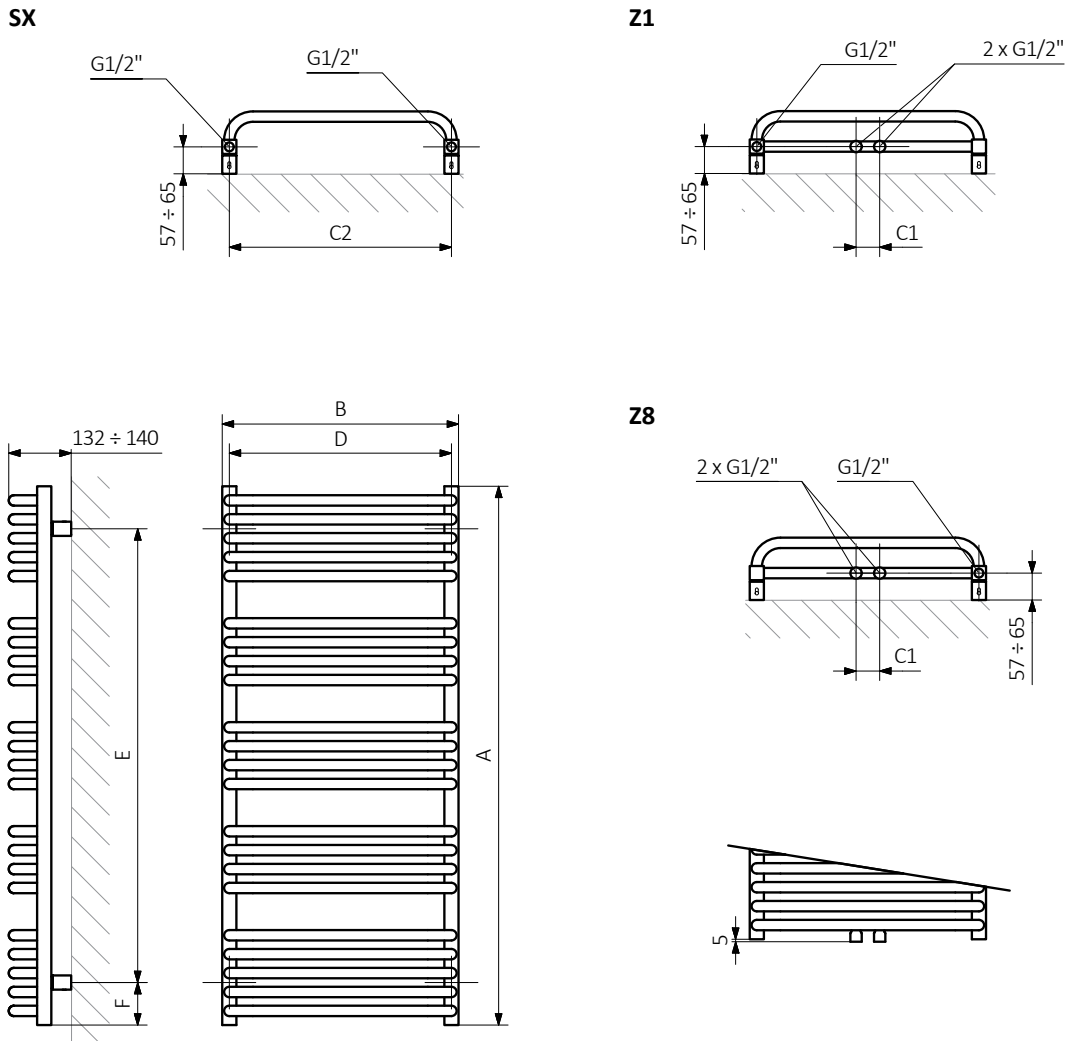


Specification:

Working pressure: 1000 kPa Maximum operating temperature: 82°C

A ↓ [mm]	B ↔ [mm]	C1 [mm]	C2 [mm]	75/65/20°C [W]	55/45/20°C [W]	 [W]	D [mm]	E [mm]	F [mm]	 [dm³]	 [kg]	Product code <small>Configuration code p. 6</small>
Paint												
540	300	50	270	180	99	200	270	360	90	1,75	3,71	WGALE054030
540	400	50	370	238	129	200	370	360	90	2,04	4,38	WGALE054040
540	500	50	470	299	161	300	470	360	90	2,32	5,04	WGALE054050
540	600	50	570	355	190	400	570	360	90	2,60	5,71	WGALE054060
760	300	50	270	257	138	300	270	580	90	2,46	5,15	WGALE076030
760	400	50	370	330	177	300	370	580	90	2,85	6,08	WGALE076040
760	500	50	470	412	220	400	470	580	90	3,25	7,02	WGALE076050
760	600	50	570	481	257	600	570	580	90	3,65	7,95	WGALE076060
1140	300	50	270	362	194	400	270	960	90	3,78	7,86	WGALE114030
1140	400	50	370	479	257	400	370	960	90	4,41	9,33	WGALE114040
1140	500	50	470	591	313	600	470	960	90	5,03	10,8	WGALE114050
1140	600	50	570	711	380	800	570	960	90	5,65	12,27	WGALE114060
1580	500	50	470	793	425	800	470	1400	90	6,90	14,74	WGALE158050
1580	600	50	570	949	508	1000	570	1400	90	7,75	16,75	WGALE158060
1580	700	50	670	1104	591	1000	670	1400	90	8,60	18,75	WGALE158070
1580	800	50	770	1253	670	1200	770	1400	90	9,45	20,76	WGALE158080
Plating												
540	300	50	270	126	64	120	270	360	90	1,75	3,57	WGALE054030
540	400	50	370	167	85	200	370	360	90	2,04	4,21	WGALE054040
540	500	50	470	209	107	200	470	360	90	2,32	4,85	WGALE054050
540	600	50	570	249	127	300	570	360	90	2,60	5,49	WGALE054060
760	300	50	270	180	92	200	270	580	90	2,46	4,95	WGALE076030
760	400	50	370	231	118	200	370	580	90	2,85	5,85	WGALE076040
760	500	50	470	288	147	300	470	580	90	3,25	6,74	WGALE076050
760	600	50	570	337	172	400	570	580	90	3,65	7,64	WGALE076060
1140	300	50	270	253	129	300	270	960	90	3,78	7,56	WGALE114030
1140	400	50	370	335	171	400	370	960	90	4,41	8,97	WGALE114040
1140	500	50	470	414	211	400	470	960	90	5,03	10,38	WGALE114050
1140	600	50	570	498	254	600	570	960	90	5,65	11,79	WGALE114060
1580	500	50	470	555	283	600	470	1400	90	6,90	14,17	WGALE158050
1580	600	50	570	664	339	600	570	1400	90	7,75	16,09	WGALE158060
1580	700	50	670	773	394	800	670	1400	90	8,60	18,01	WGALE158070

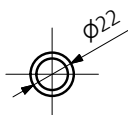
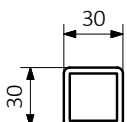
Technical drawing:



A – Height B – Width C1-C5 – Distance between pipe centres D – Horizontal distance between mounting bracket centres
 E – Vertical distance between mounting brackets F – Distance between a mounting bracket and the bottom of the radiator

Collector:

Pipe:





In the table with technical data, the last column lists product codes. When placing an order, please remember to quote the product code followed by the configuration code as shown in the diagram below:

The construction of a water and dual fuel radiator product and configuration code

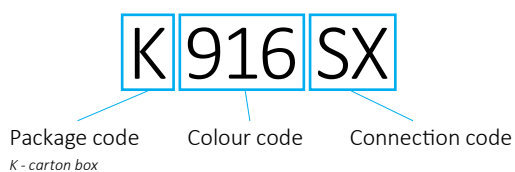
WGALE054030

K916SX

PRODUCT CODE
(located in the table for the product)

CONFIGURATION CODE
(supplemented by hand)

Example Configuration



Construction of electric heater configuration code:

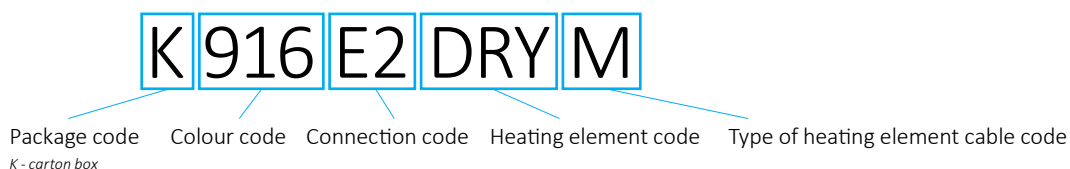
WLALE054030

K916E2DRYM

PRODUCT CODE
(located in the table for the product)

CONFIGURATION CODE
(supplemented by hand)

Example Configuration



Epoxy primer

E - Code of epoxy primer is an extra processes.

WGALE054030 K916SX **E** — *Extraprocessesoradditionscode*



Legend



Radiator available in a "water" version.



Radiator suitable for dual fuel connection. Electric heating element can be installed.



Radiator available in electric only version. It comes prefilled with a 'heating medium' and equipped with a heating element. All tested and ready to use.



Connection types dedicated for this radiator. The icon shows the flow and return connections for the radiator as well as the thermostatic valve and heating element position if applicable.



Suggested heating element power output for electric and dual fuel versions.



Weight.



Capacity.



Available in chrome finish.



No additional payment for a color.